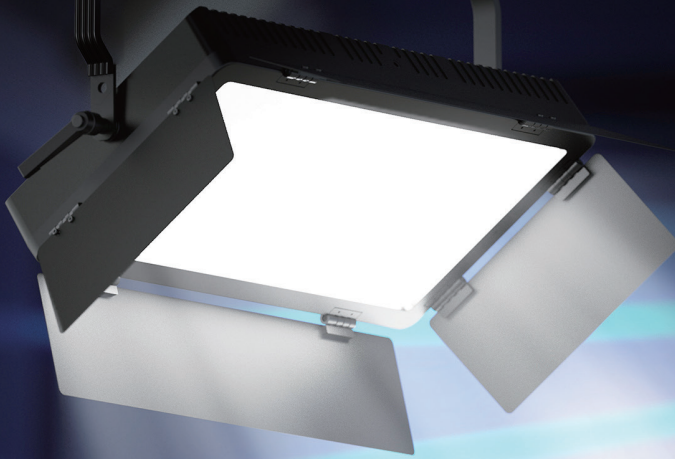


# SWIT

## 100W Daylight Studio SMD Panel LED Light

### CL-100



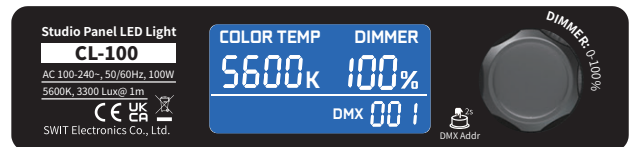
### 100W, 3300Lux@1m

CL-100 is a 100W 2:1 studio panel light, consists of 720pcs 5600K long life SMD LEDs, 3300Lux @ 1m high bright luminance, with DMX control, high CRI/TLCI and accurate color performance, for broadcast studio, mobile studio, live streaming studio install applications.



### 5600K Daylight SMD LEDs

CL-100 adopts 4-step MacAdam Ellipse SMD-LEDs, outputs accurate 5600K color temperature for daylight studio application.

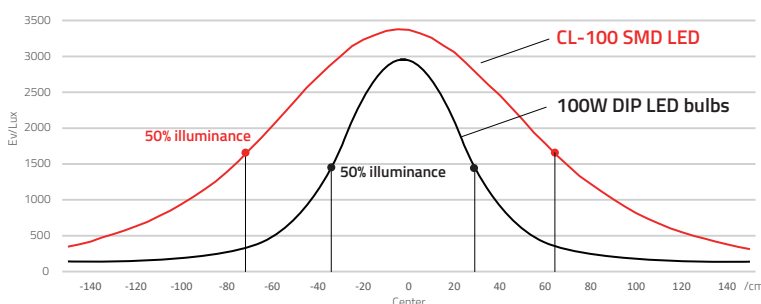


### Soft Wider Beam Angle

The CL-100 SMD LEDs have wider beam angle comparing to the traditional DIP LED bulbs. It will generate an equally spread area light from center to edge, instead of a glaring light spot that suddenly declined from center to edge.

The wider angle equally spread light produces a nature light environment in studio.

Beam angle testing at 1 meter



### CRI 97; TLCI 99

CL-100 featured ultra high CRI Ra 97 and TLCI 99, will keep the object original colors under lights.



Sector	Lightness	Chroma	Hue
R	0	0	0
R/Y	0	0	0
Y	0	0	+
Y/G	0	0	0
G	0	0	0
G/C	0	0	0
C	0	0	0
C/B	0	0	+
B	0	0	0
B/M	0	0	0
M	0	0	0
M/R	0	0	0

# CL-100 100W Daylight Studio Panel

# SWIT



## Power and Control

**5-pin DMX512 IN & OUT**

**5V USB power output**

**Optional: LA-WR8 Wireless DMX Receiver**

**Optional: LA-G100 40° Honeycomb**

**Control Info Display**  
Dimming, Color temp, DMX address display.

**COLOR TEMP 5600K**

**DIMMER 100%**

**DMX 001**

**DIMMER 0-100%**  
Long Press: To set DMX address

**PowerCON TRUE1 AC IN & LOOP OUT**

**Included: TRUE1 AC Cable**

**Optional: TRUE1 Loop Cable PA-LC20**  
2 meters length, Max 16A load;  
220V: Loop up to 25x CL-100  
110V: Loop up to 13x CL-100



## Specifications

Model	CL-100
LEDs	720pcs SMD LEDs
Color Temp	5600K
Illuminance	3300Lux @ 1m
Beam angle	65° half peak
Color Render	CRI 97; TLCI 99
DMX	5-pin XLR DMX in & out
Input Voltage	AC 100-240V, 50/60Hz PowerCON True1 in & out
Power	100W
Net Weight	3.2kg incl. Barndoors

