

# SWIT®



## BM-U245HDR

## 23.8" 1000nits 12GSDI 4K/8K HDR Monitor

### Features

#### ■ 23.8-inch UHD High Bright LCD

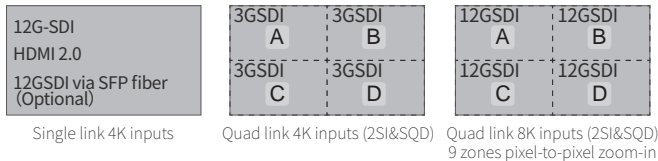
3840x2160 UHD native resolution IPS panel, 10bit 1.073G colors, 1000nits high bright LED backlight, 1000:1 contrast.

#### ■ 18-bit Processing

Internal 18-bit signal processing.

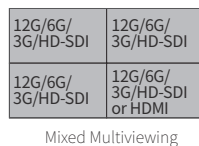
#### ■ 4K & 8K UHD Interfaces

12GSDI 4-in 4-out, supports Single link 4K, Quad link 4K and Quad link 8K inputs; HDMI 2.0 input, and 12GSDI via fiber input by optional SFP adaptor.



#### ■ Mixed inputs Multiviewer

4x independent 12G/6G/3G/HD-SDI or HDMI 1.3/1.4/2.0 mixed inputs multiview; Display waveform, vector, audio meters, EOTF, color gamut for each input.

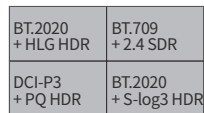


#### ■ HDR/Color Gamut selection, Payload ID auto setting

Gamma 1.0/1.8/2.2/2.4/2.6 or HLG/PQ/Slog3 HDR selection; BT.709, DCI-P3, BT.2020 selection; Payload ID auto set input range, color space, HDR/SDR, color gamut, color depth, etc.

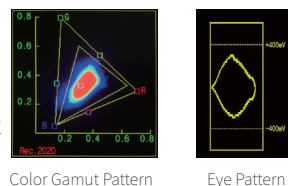
#### ■ Multi Color Gamut & EOTF Viewing

1 input source copied to 4 windows and display different HDR/SDR and color gamut simultaneously.



#### ■ Color Gamut Pattern

Display BT.709 and BT.2020 color gamut position pattern.



#### ■ Eye Pattern

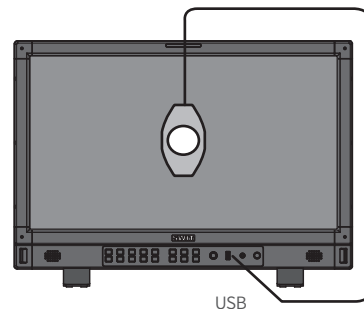
Built-in eye pattern to check input video transmission quality.

#### ■ Zero Latency Processing

Less than 1/100 frame audio/video latency for 4K input sources, for special image processing mode for lip-sync monitoring.

#### ■ 3DLUT Auto Self-Calibration

Built-in calibration software, supports X-rite i1 and JETI Specbos 1211 probes directly plug into monitor USB port to auto calibrate. Calibration time: X-rite i1: 15min; Specbos1211: 45min  
Calibration result:  $\Delta E < 1.0$



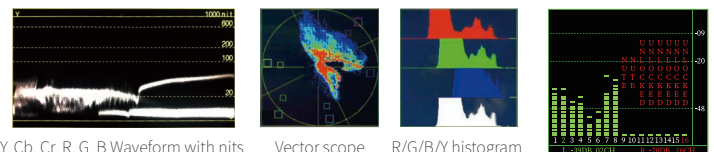
Built-in 3DLUT calibration software, Directly connect color sensor probe to monitor USB port, and the monitor will calibrate itself automatically.

#### ■ Delog 3DLUTs & User 3DLUTs Upload

With built-in De-log LUTs including Log-C, S-log2, S-log3, C-log, V-log and RedLogFilm LUTs, to convert Log video to 709 SDR or HLG/PQ HDR. Support User 3DLUTs upload by USB.

#### ■ Waveform/Vector/Histogram

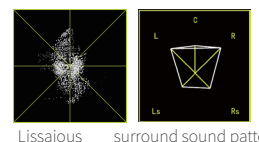
Support waveform (Y, Cb, Cr, R, G, B) and single line mode; support vector scope and R/G/B/Y histogram display, with multiple display position, size and color selection.



16-ch audio meters

#### ■ Audio Patterns

Display up to 16-ch audio level meters, and select any 2 channels to output via 3.5mm socket or speakers; Support Lissajous and 5.1+2 surround patterns.



#### ■ Others

Focus assist, R/G/B/mono, False color, Zebra, H/V delay, Freeze; 15:9, 14:9, 13:9, 4:3, 2.35:1, 2:1, 1.85:1 and User defined markers; Support TSL 3.1/4.0 UMD and text TALLY display; GPI control and webserver IP control, USB firmware updates.



- ◆ 4x12GSDI, 8K Input Ready
- ◆ 1000nits, HLG/PQ/S-log3 HDR
- ◆ Multi CG/EOTF viewing
- ◆ 3DLUT Self-calibration, dE<1.0

## Video Formats

### SDI 1/2/3/4 IN/OUT, SFP (Optional)

4096×2160p (60 / 59.94 / 50 / 30 / 29.97 / 25 / 24 / 23.98)  
 3840×2160p (60 / 59.94 / 50 / 30 / 29.97 / 25 / 24 / 23.98)  
 2048×1080p (60 / 59.94 / 50 / 30 / 29.97 / 25 / 24 / 23.98)  
 2048×1080i (50 / 59.94 / 60)  
 1080p (60 / 59.94 / 50 / 30 / 29.97 / 25 / 24 / 23.98)  
 1080i (60 / 59.94 / 50)  
 1080psf (30 / 29.97 / 25 / 24 / 23.98)  
 720p (60 / 59.94 / 50)  
 480i (59.94) 576i (50)

### 4K Quad-link SDI IN/OUT (each channel)

2048×1080p (60 / 59.94 / 50 / 30 / 29.97 / 25 / 24 / 23.98)  
 1080p (60 / 59.94 / 50 / 30 / 29.97 / 25 / 24 / 23.98)

### 8K Quad-link SDI IN/OUT (each channel)

4096×2160p (60 / 59.94 / 50 / 30 / 29.97 / 25 / 24 / 23.98)  
 3840×2160p (60 / 59.94 / 50 / 30 / 29.97 / 25 / 24 / 23.98)

### HDMI IN

4096×2160p (60 / 59.94 / 50 / 30 / 29.97 / 25 / 24 / 23.98)  
 3840×2160p (60 / 59.94 / 50 / 30 / 29.97 / 25 / 24 / 23.98)  
 1080p (60 / 59.94 / 50 / 30 / 29.97 / 25 / 24 / 23.98)  
 1080i (60 / 59.94 / 50)  
 720p (60 / 59.94 / 50)

## Specifications

Model		BM-U245HDR
Display	LCD size	23.8 inches
	Resolution	3840×2160
	Aspect Ratio	16:9
	Color Depth	10bit 1.073G colors
	Signal Process	18bit
	Color Gamut	100% Rec709; 91.9% DCI-P3
	Viewing angle	H/V 178/178
	Backlight	LED
	Brightness	1000nits
	Contrast	1000:1
Input	SDI	12G/6G/3G/HD-SDI ×4
	HDMI	HDMI 2.0 ×1
	UMD	RS485×1
	GPI (Tally)	RS485×1
	Ethernet	RJ45×1, 1000M
	USB	USB-A×1 – 3DLUT & Firmware
Output	SDI	12G/6G/3G/HD-SDI ×4
	Analog audio	3.5mm headphone + Speaker
	UMD	RS485×1
General	AC Input	AC 100-240V 50/60Hz
	DC Input	DC 12-17V & V-mount plate
	Power	≤120W
	Working environment	0°C - +40°C; 10% - 90%
	Storage environment	- 15°C - + 60°C; 10% - 90%
	Dimensions	593×404.5×92mm
	Weight	10kg

