

M-1093F

Dual 9" FHD Rack LCD Monitor

SWIT®



■ Introductions

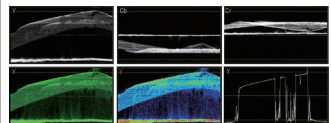
- ◆ 9-inch IPS LCD Panel × 2
- ◆ 1920 × 1200 resolution, 800:1 contrast
- ◆ 19-inch 4U rack mounting, ± 30° rotatable
- ◆ 2K/3G/HD/SD-SDI, HDMI, CVBS monitoring
- ◆ 16-ch Embedded audio meters with alert
- ◆ Select any 2 audio channels to output
- ◆ Waveform Y/Cb/Cr/R/G/B and single line
- ◆ Vector scope, histogram R/G/B/Y
- ◆ AFD, H/V delay, R/G/B/Mono, False color
- ◆ TSL UMD and text TALLY display
- ◆ Zebra stripes, Peaking focus assist
- ◆ SDI timecode display
- ◆ Marker 4:3, 13:9, 14:9, 15:9, 1.85:1, 2.35:1
- ◆ TALLY light and GPI control
- ◆ USB firmware upgrade

■ Features

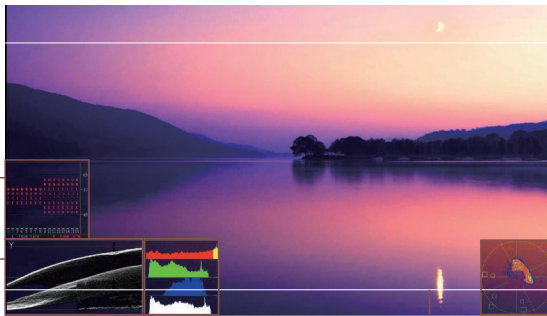
Audio Meters

SDI: 16-ch / HDMI: 2-ch
 Select any 2 channel to output
 Audio abnormal alert info display
 Display only 2-ch, 8-ch, or full 16-ch
 Chart position / Translucent adjust

Waveforms



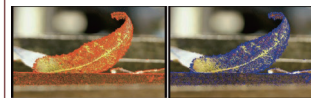
Y/Cb/Cr/R/G/B with single line selection
 White / Green / False color display
 Larger size waveform in center
 Chart position / Translucent adjust



Histogram

R/G/B/Y histogram display
 100%–107% Over-exposure alert

Peaking Focus Assist



Red / Blue lines select

Vector Scope

White / Color / False color display
 Larger size vector pattern in center
 Chart position / Translucent adjust

Scale Markers

4:3, 13:9, 14:9, 15:9, 1.85:1, 2.35:1 markers
 Mask background translucent adjust

■ Specification

LCD Performance

Size	9 inches × 2
Display area	191.5 × 119.7 mm
Resolution	1920 × 1200
Color	8 bit, 16.77M Color
Aspect ratio	16:9 (4:3 adjustable)
Brightness	450 cd/m ²
Contrast	1000:1
Viewing Angle	H/V:170° / 170°

Input/output (Each LCD)

Input	BNC × 2	2K/3G/HD/SD-SDI input × 2
	BNC × 1	CVBS input
	HDMI-A × 1	HDMI 1.3 input
	GPI × 1	UMD, GPI × 1
Output	3.5mm × 1	analog audio input
	BNC × 2	2K/3G/HD/SD-SDI loop output × 2
	BNC × 1	CVBS loop output
	HDMI-A × 1	HDMI 1.3 loop output
	3.5mm × 1	SDI/HDMI/analog audio output

Video Format

SDI	SMPTE-2048-2	2048 × 1080p (23.98 / 24 / 25 / 29.97 / 30 / 50 / 59.94 / 60) 2048 × 1080i (50 / 59.94 / 60)
	SMPTE-425M-A/B	1080p (60 / 59.94 / 50) 1080i (60 / 59.94 / 50)
	SMPTE-274M	1080p (30 / 29.97 / 25 / 24 / 23.98)
	SMPTE-RP211	1080psf (30 / 29.97 / 25 / 24 / 23.98)
	SMPTE-296M	720p (60 / 59.94 / 50)
	SMPTE-125M	480i (59.94)
	ITU-R BT.656	576i (50)
HDMI		480i / 576i / 480p / 576p 1080i (60 / 59.94 / 50) 720p (60 / 59.94 / 50) 1080p (60 / 59.94 / 50 / 30 / 29.97 / 25 / 24 / 23.98) 1080psf (30 / 29.97 / 25 / 24 / 23.98)
	CVBS	NTSC / PAL

General

Input voltage	DC 6.5V-24V
Power consumption	36W
Working temperature	0°C ~ +40°C
Working humidity	10% ~ 90%
Storage temperature	- 15°C ~ + 60°C
Storage humidity	10% ~ 90%
Dimensions	484 × 177 × 112.8mm
Net weight (main body)	2.8kg

SWIT Electronics Co., Ltd.

Distributed by:

Website: www.swit.cc Tel: +86 25 85805753
 Email: contact@swit.cc Fax: +86 25 85805296